



Land with planning FOR SALE, Pit Lane, Ketton PE9 3SZ

1.7 acres Commercial Building
Land FOR SALE with planning for
18 Industrial units

Guide Price £950,000

Circa 23,625 sq ft when built

- 1.7 acre Development site For Sale
- Planning for 18 Industrial units of 100 Sq m to 175 Sq m
- Cleared site ready to build
- "In and Out" access for Large vehicles and Lorries
- Total building size when built circa 23,625 sq ft

Land with planning FOR SALE, Pit Lane, Ketton PE9 3SZ

Summary

Size - 25,000 sq ft when built units

Price - £950,000

Legal Fees - Both parties will be responsible for their own fees

VAT - Not Applicable

EPC - EPC exempt - No building present

Rates - TBC

Description

The site is well located in Ketton with good access from the main road and benefitting from full planning permission for 18 small industrial units with a total sq foot size of 23,625 sq ft.

The site is clean and level and ready to develop, there is a shared access road to the site for the adjoining developments.

Location

The site adjoins an existing recently built Industrial Park which is fully occupied and contains a Gym, Retail units and some offices in addition to the Industrial Units to the rear. The A1 is less than 2 miles away with North and South bound access.

Ketton is a village in Rutland in the East Midlands of England. It is about 8 miles east of Oakham and 3 miles west of the centre of Stamford. The 2011 Census recorded a parish population of 1,926, making it the fourth largest settlement in Rutland, after Oakham, Uppingham and Cottesmore.

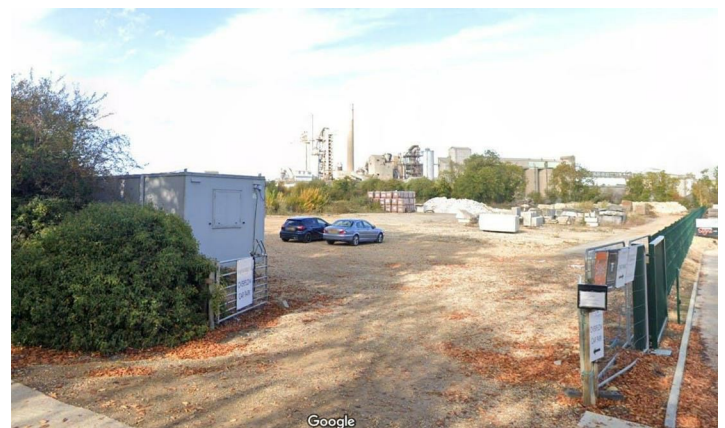
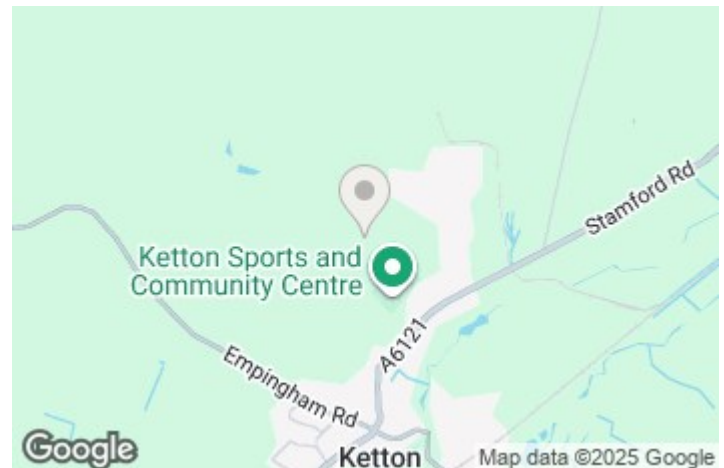
Terms

Offered For Sale Freehold £950,000 No vat

Benefitting from planning permission for 18 units.

Viewings

The land can be seen from Pit Lane without appointment. Any one wishing to walk the site should make an appointment with the agents P&F Commercial on 01664 431330 or email: office@pandfcommercial.com. All site visits are at the visitors risk.



Viewing and Further Information

Ben Freckingham

Email: office@pandfcommercial.com

Tel: 01664 431330